

Tune up your trunk with

Trunk Spatter Finishes by:

ZOLATONE[®]

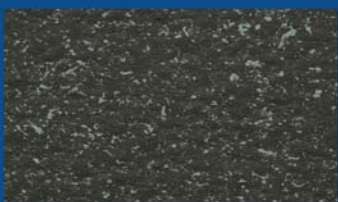
AUTOMOTIVE • INDUSTRIAL • MARINE



Gray Black
ZT-20-TS01



Gray White
ZT-20-TS02



Black Aqua
ZT-20-TS03



Trunk Spatter

- Ideal for use on trunk interiors, storage chests, and metal lockers
- Most popular colors used in vintage cars from the 1960s and 1970s
- Scuff resistant
- Multi-color finish
- Covers gouges and abrasions
- Restores trunk interiors to an almost new finish

Technical Information

- Always read specific can instructions to achieve maximum results
- Make sure that the surface area is clean and dry
- Paint in good weather - avoid direct sunlight and hot, humid weather
- When applying, use a primer gun with a pressure pot for best results
- If touching up, use the Zolatone Power Spray kit (8209)
- A smooth application is important - first coat should be at a high pressure, second coat - at a lower pressure
- Avoid overspray

Ordering Information

Part Number	Description	Size
ZT-20-TS01	Gray Black	Qt/ 6 per case
ZT-20-TS02	Black Aqua	Qt/ 6 per case
ZT-20-TS03	Gray White	Qt/ 6 per case

Zolatone Automotive, Industrial & Marine
A Division of Advanced Refinish Technologies
850 Ladd Road, Building E, Walled Lake, MI 48390
Phone: 800.360.7744 Fax: 248.668.8121